



99 Broadway, Nedlands. PO Box 3172, Broadway Nedlands, Western Australia 6009  
Tel: (08) 9389 9669 Fax: (08) 9389 9660 oceanica@oceanica.com.au ABN: 89 093 752 811

## About Us

Oceanica Consulting Pty Ltd (Oceanica) is an environmental and engineering consultancy that specialises in coastal and marine issues. Oceanica is located in Perth, Western Australia and has extensive experience in the management and implementation of environmental programmes for coastal and estuarine systems, and in the preparation of detailed documentation for regulatory approval, including interaction with all statutory authorities. Oceanica has also been actively involved in public consultation and community information programmes for many major projects in Western Australia.

All of Oceanica's professional personnel have high-level academic qualifications and wide experience, and can provide a range of multi-disciplinary skills and services. The Oceanica team has built a reputation for quality environmental consulting with a high degree of integrity and reliability in the areas of:

- Project and Data Management;
- Environmental Surveys/Monitoring;
- Engineering/Modelling;
- Coastal Processes and Geomorphology;
- Technical Reports/Reviews/Advice;
- Environmental Impact Assessment;
- Communications/Public Relations;
- Environmental Management Plans; and
- Research/Teaching.

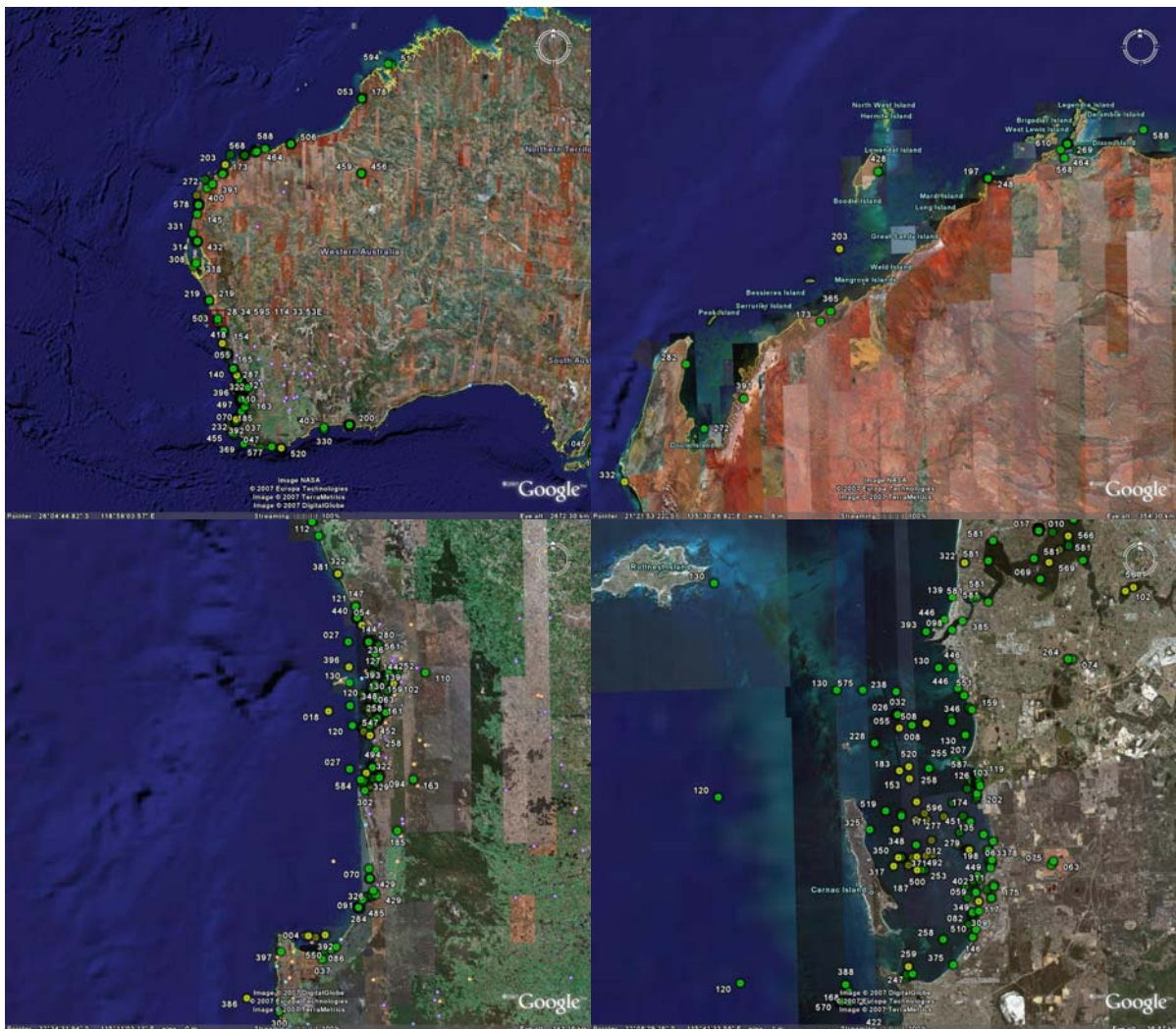
Oceanica has undertaken over 600 separate projects for approximately 90 clients, with a relatively even distribution of work for Government, Corporations and Professional Service Firms. These projects have ranged in size and complexity; from multi-disciplinary projects with budgets in \$Millions to *pro bono* work on single issues. The vast majority of this work has been marine and coastal work in Western Australia, as shown in the following project maps.

## General Information

Street Address:  
99 Broadway Nedlands, Western Australia

Postal Address:  
Oceanica Consulting Pty Ltd  
PO Box 3172 Broadway  
NEDLANDS WA 6009  
AUSTRALIA

ABN: 89 093 752 811  
Phone: 61 8 9389 9669  
Fax: 61 8 9389 9660  
Web: [www.oceanica.com.au](http://www.oceanica.com.au)



## Distribution of Oceanica projects in WA

### Systems, Quality Assurance and Insurances

Oceanica has systems in place for all elements of its business, including: policy; business planning; project management; office procedures; occupational health and safety; and maintenance of technical excellence. Oceanica has a strong commitment to ensuring that the systems in place within the organisation are current best practice (e.g. alignment with ISO 9001 Quality Procedures). Systems have been developed with the two-fold aim of: (1) improving the efficiency of our work environment for all employees; and (2) maximising the level of service we can provide to our clients.

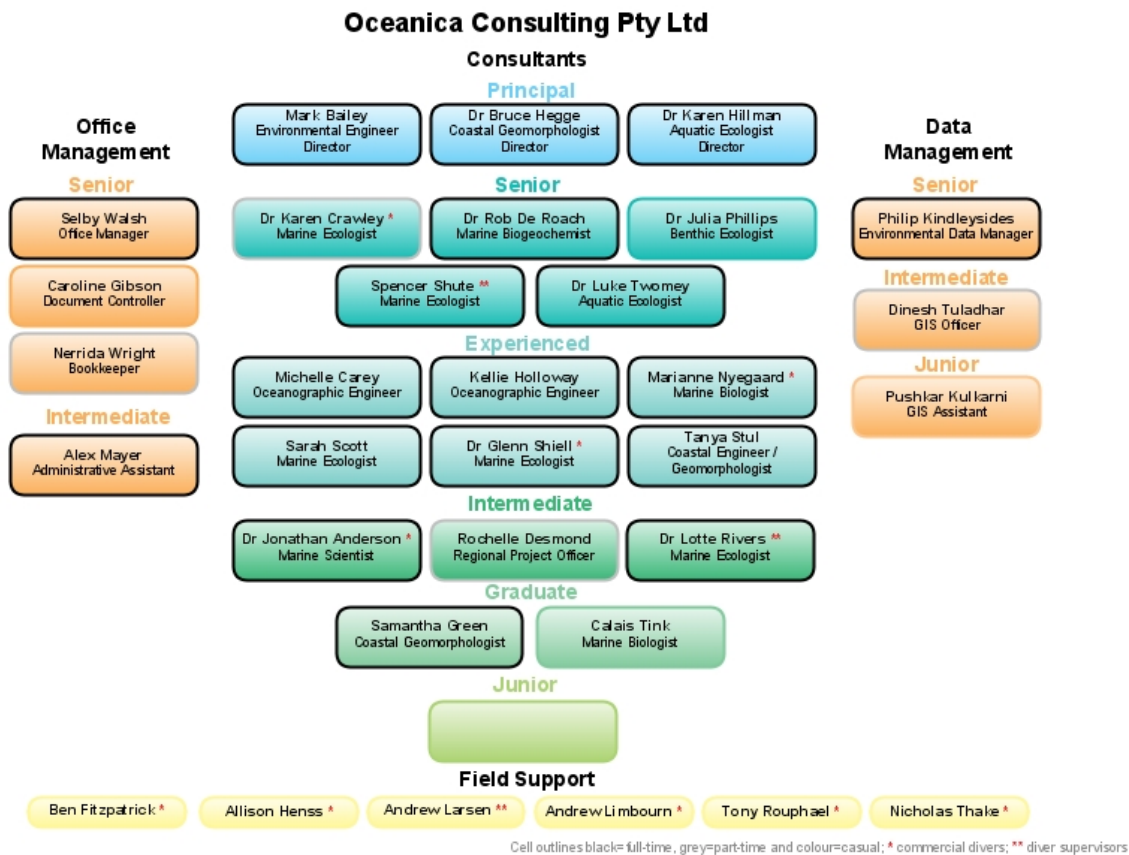
Oceanica's systems are managed via state-of-the-art software that allows the sharing, searching and editing of content; online collaboration; knowledge management and document management. In addition, Oceanica's project and finance control systems are managed via advanced project management software, to enable detailed time and cost tracking at sub-project levels in real time.

Oceanica maintains the following insurance covers:

- Professional Indemnity Insurance;
- Public Liability Insurance;
- Workers' Compensation Insurance;
- Commercial Insurance;
- Business Person Insurance.

## Professional Staff

Oceanica employs 16 full-time professional consulting staff, three part-time consulting staff, four full-time management/administration staff and three part-time management/administration staff. Details on Oceanica staff and the staff organisation chart are provided below (in alphabetical order within experience levels).



### Principals

**Mark Bailey** is a director of Oceanica and is an experienced Certified Practising engineer in the fields of civil and environmental engineering. He has experience as a civil engineer in the fields of marine construction and commercial project management and extensive experience in marine environmental impact studies, environmental project management, modelling of aquatic ecosystems and marine quality assessments.

**Dr Bruce Hegge** is a director of Oceanica and an experienced coastal scientist. Bruce's background is in coastal geomorphology; particularly beach systems, nearshore and coastal hydrodynamics and marine sedimentology. He also has extensive experience in environmental assessment and management of dredging operations. Bruce has a long-term involvement in the development and application of techniques for the broad-scale mapping of benthic habitats. He has strong skills in project management, data analysis, report writing and presentation.

**Dr Karen Hillman** is a director of Oceanica and aquatic ecologist with over twenty seven years experience in research, and the development and co-ordination of environmental monitoring programmes, in estuarine and coastal ecosystems. Karen has strong skills in strategic planning, programme evaluation, the distillation and interpretation of multi-disciplinary data, and report writing.

### Senior Consultants

**Dr Karen Crawley** is a coastal ecologist with a PhD in Environmental Management examining the role and interactions of detached macrophyte accumulations in surf zones. Karen has had several years experience within the Department for Environment and

Conservation, working in both the Marine Ecosystems Branch and the Environmental Audit Section. Karen is qualified for commercial diving in accordance with AS2815 part 1.

**Dr Robert De Roach** is a Ph.D. qualified marine biogeochemist (UWA) with over eight years consulting and research experience in environmental impact assessment (EIA), biological surveys, water quality management, environmental compliance and approvals. Robert completed his research studies on the Swan River Estuary, Western Australia, within the context of eutrophication management. His professional experience includes several years as an environmental consultant, mainly undertaking biological surveys and broader EIA for clients associated with the Western Australian North West Shelf oil and gas industry. Prior to joining Oceanica, Robert was a senior consultant, where his role entailed EIA support to mining company clients, environmental auditing, risk assessment and on-site environmental adviser at a mineral processing refinery.

**Dr Julia Phillips** is a Ph. D. qualified marine biologist (Otago University, New Zealand) with 15 years experience in marine benthic ecology both in Australia and overseas, both as a research scientist and as a consultant marine scientist. Julia's work has covered a wide range of applications including researching anthropogenic nutrient loads on nearshore coastal communities, using stable isotopes as bioindicators of nutrient sources, dredge impact and recovery assessment, water quality management, benthic primary producer assessment and impact management, habitat mapping and preparation of environmental impact assessment (EIA) documents. Prior to joining Oceanica, Julia worked for seven years as a Research Scientist with CSIRO Marine & Atmospheric Research.

**Spencer Shute** is a Masters qualified marine ecologist and commenced marine consulting in 2000 following several years working within government departments. While based in the UK, Spencer undertook a range of baseline and environmental impact studies for projects ranging from small-scale aggregate dredging and wastewater discharge to offshore wind farms and oil and gas exploration. Studies were completed around the UK and in the Mediterranean, Arabian Gulf and Indian Ocean. Since joining Oceanica in 2004, Spencer has developed in-house expertise in habitat mapping techniques and was Dive Officer from 2004 to 2008. Spencer has extensive experience in environmental impact assessment, environmental risk assessment, project management and in the preparation of environmental approval documentation. Spencer is qualified for commercial diving to ADAS 1, and is an ADAS-qualified dive supervisor.

**Dr Luke Twomey** Luke has 14 years of experience across the fields of management, teaching and research in estuarine, nearshore and offshore coastal environments, both in Australia and internationally. Luke's most recent position has been as Principal Scientist with the Swan River Trust where he was responsible for the relevance, rigour and strategic direction of scientific effort at the Swan River Trust.

### ***Experienced Consultants***

**Michelle Carey** is a qualified oceanographic engineer and scientist graduating from the University of Western Australia in 2004. Michelle has experience in the mining industry having completed GIS, flora and fauna surveys, risk assessments and microbial bioleaching projects as part of her undergraduate engineering degree. Michelle has undertaken a range of coastal and fluvial processes, oceanographic and marine ecology studies.

**Kellie Holloway** is an engineer graduating with honours in Applied Ocean Science at the University of Western Australia in 2006. Kellie has experience in oceanography, coastal engineering, sustainability and coastal planning and management projects as part of her undergraduate engineering degree. As part of her work at Oceanica, Kellie has assisted in coastal, oceanographic and water quality studies, as well as data management in various projects.

**Marianne Nyegaard** is a Master qualified marine biologist. Marianne has a number of years of fisheries research experience and most recently has been advising on approvals for a major dredging project in Western Australia. Marianne has also expertise in marine

habitat surveys and scientific diving work. Marianne is qualified for commercial diving in accordance with AS2815 parts 1 & 2.

**Sarah Scott** is a Marine Ecologist with a double major in marine biology and zoology with honours in marine biology from the University of Western Australia. Sarah has previously been employed by the Department of Environment and Conservation within the Compliance Monitoring section auditing compliance with Ministerial Statements. Sarah is an accredited lead environmental auditor with the RABQSA International.

**Dr Glenn Shiell** is a marine ecologist and has completed a PhD in marine ecology (UWA) and an honours degree in limnology/aquatic science (Deakin). Glenn completed his postgraduate studies on the ecology of benthic invertebrates on Ningaloo Reef, Western Australia. His professional and technical experience includes several years of consulting in the field of aquatic science, and more recently, a year working with the Marine Ecology Group, UWA, investigating the ecology of demersal fin fish assemblages of Western Australia, New Zealand and the Sultanate of Oman. Glenn is qualified for commercial diving in accordance with AS2815 part 1.

**Tanya Stul** is a qualified coastal engineer and coastal geomorphologist graduating from the University of Western Australia and Old Dominion University (USA) in 2005. As part of her university work, Tanya has undertaken studies of coastal, estuarine and fluvial processes, boat wake measurements and impacts, coastal structures, dredging, beach nourishment, sediment transport processes and data analysis. Tanya also has experience in dredging impact assessments, sediment cell identification and shoreline stability assessments.

### ***Consultants***

**Rochelle Desmond** joined Oceanica as a Regional Project Officer. Rochelle is based in Geraldton and undertakes a key role in coordinating the Oakajee Port marine mammal surveys. Rochelle will also provide further support for the Oakajee project in general, and other support in the region as required. Rochelle has recently (mid 2009) completed a Bachelor of Business at Edith Cowan University with a double major in Management and Politics.

**Dr Lotte Rivers** is a PhD qualified marine ecologist. Her PhD findings developed techniques to increase the success and survival of transplanted seagrasses in Cockburn Sound, Western Australia. Lotte's professional experience includes management of the Seagrass Research and Rehabilitation Plan which successfully transplanted over three hectares of seagrass into Cockburn Sound. Lotte is a confident field leader with over 10 years boating and SCUBA experience and she has organised many surveys of coral, seagrass, algae and sediments throughout Western Australia. Lotte is qualified for commercial diving in accordance with AS2815 part 1.

### ***Data Management/GIS Services***

**Philip Kindleysides** is Oceanica's Senior Environmental Data Manager and Marine Cartographer. Philip holds a Bachelor of Science in Information Systems and a Bachelor of Science in Cartography. Philip has experience in managing spatial and aspatial data via logical data frameworks, relational databases and integrated documentation. As a Cartographer, Philip is responsible for the in house design of Oceanica's map products. Philip is an experienced user of ArcView GIS 3.2, ArcGIS 9.1 and related spatial software packages. Prior to commencing work for Oceanica, Philip worked as a Marine Information Officer in the GIS section of CALM's Marine Conservation Branch.

**Pushkar Kulkarni** is Oceanica's Junior Environmental Data Manager and Marine Cartographer. Pushkar has completed a Bachelor of Technology in Agricultural Engineering, and is presently completing a Master of Science in GIS at Curtin University. His skills include the assessment of vegetation types derived using remotely sensed imagery and semi-auto classification techniques.

**Dinesh Tuladhar** is Oceanica's Intermediate Environmental Data Manager and Marine Cartographer. Dinesh has completed a Master of Arts in Geography from Tribhuvan

University, Nepal and is presently completing a Master of Science in GIS at Curtin University. Prior to joining Oceanica he has worked in instructing GIS trainees, analysis of GIS data and several GIS database development projects.

### ***Graduate/Junior support***

**Samantha Green** is a graduate coastal geomorphologist with a B.Sc. Hons at UWA in coastal geomorphology. Sam's Honours project looks at coastal vulnerability of the Perth coastline to sea level rise.

**William Hibberd** is finalising a M.Sc. in Applied Marine Science, specialising in coastal geomorphology from The University of Plymouth. William's MSc study units have included: Coastal and Estuarine Sediment Dynamics; Coastal Erosion and Protection; Modelling Marine Processes; and Marine Chemistry and Coastal Ecology. He has also obtained a B.Sc. with 1st Class Honours from The University of Plymouth.

**Calais Tink** is a Junior Marine Biologist who has recently completed her Honours research into fish mortality, fish stock estimates and ecosystem modelling at Murdoch University. Calais is currently employed on a casual basis, to assist with various projects.

In addition to the above staff, Oceanica employs a full-time office manager and full time administrative assistant and two part-time administrative assistants. All Oceanica personnel have senior first aid qualifications.

Oceanica also draws on a broad network of specialist consultants and commercially trained contract scientific divers as required. Oceanica has well established working relationships with other specialist consultant groups, including Biota Environmental Sciences, Data Analysis Australia, Jesz Fleming and Associates, Murdoch University's Marine and Freshwater Research Laboratory, MScience Associates and Strategen.

## Awards, Affiliations and Corporate Citizenship

The work by Oceanica has received the following awards:

- Cement Industry Federation Sustainability Award winner for 2007: Seagrass Research and Rehabilitation Plan;
- Finalist in the 2006 WA Environment Awards for the Perth Long-term Ocean Outlet Monitoring (PLOOM) Programme;
- Engineers Australia (Western Australia Division), Excellence Awards Winner 2003 (Environment Category): Bunbury Ocean Outfall Project;
- Golden Gecko 2000: Environmental Excellence Award made to Cockburn Cement Limited, for seagrass rehabilitation work conducted under Oceanica staff management; and
- Institution of Engineers, Australia (South Australia), Excellence Award: 1997. For work conducted in association with the Multifunction-polis, Australia in assessment of developments in the Port Adelaide River, Adelaide.

Oceanica's staff holds the following professional affiliations and are active in voluntary capacity on the committees as shown:

- Australian Marine Science Association (AMSA) (*WA Branch President and Treasurer from Oceanica staff*);
- Environmental Consultants Association (ECA) (*President and Committee member from Oceanica staff*);
- Institution of Engineers, Australia Coastal and Ocean Panel (IEAust) (*President, Secretary and Committee member from Oceanica staff*);
- Australian Water Association (AWA); and
- Society of Environmental Toxicology and Chemistry (SETAC).

Oceanica's corporate citizenship includes:

- Sponsorship of a Murdoch University marine science honours prize
- Sponsorship of the annual AMSA WA post-graduate student camp
- Sponsorship of the annual University of Western Australia Student Environmental Engineers Club quiz night
- Regular donations to Royal Flying Doctor Service of Australia
- Office powered by 100% Natural Power renewable energy
- Vehicles, office and air travel are carbon neutral
- Corporate donors for the Australian Red Cross Blood Service
- Predominant use of recycled paper within the office

*Last updated December 09*